

### TEST CONDITIONS

Test Date	3/26/24
Test Conductor	Bret Martin
Boat Weight as Tested (lbs)	16390
Air Temperature (degrees F)	84
Elevation (ft)	0
Sea State	Choppy
Wind Velocity range (mph)	20
Fresh/Salt Water	Saltwater
Fuel Level at Testing (gal)	200

### ENGINE SPECIFICATIONS

Number of Engines	4
Engine	400 V10
Horsepower	400
Cylinders	10
Drive or gear model and ratio	HD Camber 2.08
Mounting Bolt Hole	2,2,2,2
Engine Height (in)	3.5,3.5,3.5,3.5
Engine Setback (in)	27.0,27.0,27.0,27.0
Engine Length (in)	30,30,30,30

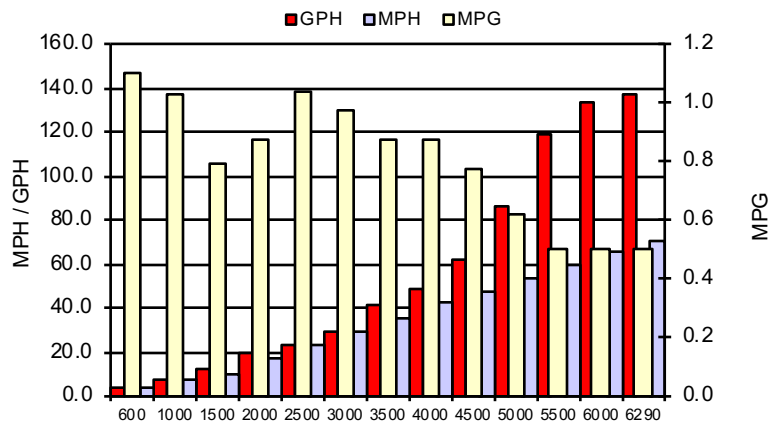
### PERFORMANCE SUMMARY

Top Speed (mph @ rpm)	70.1	6290
Acceleration 0 - 20 mph (seconds)	3.98	
Acceleration 0 - 30 mph (seconds)	5.81	

### PROPELLER SPECIFICATIONS

Mercury Name	Revolution X
Material	Stainless Steel
Pitch	25.0,25.0,25.0,25.0
Number of Blades	4

### PERFORMANCE CURVE



### BOAT SPECIFICATIONS

Region/s sold	
Manufacturer	Twin Vee
Website	<a href="http://www.twinvee.com">www.twinvee.com</a>
Boat Model	40 GFX CC
Boat Type	Offshore Saltwater
Material	Fiberglass
Length (ft)	40
Beam (ft)	12
Max hp Capacity	0
Fuel Tank Capacity (gal)	750
Steering Type	Electric JPO
Dry Boat Weight (lbs)	14500

### PERFORMANCE DATA

RPM	SPEED	FUEL CONSUMPTION	FUEL CONSUMPTION	RANGE
RANGE	MPH	GPH	MPG	MILES
600	4.3	4.0	1.1	825
1000	7.5	7.3	1.0	773
1500	10.3	12.9	0.8	597
2000	16.8	19.2	0.9	653
2500	23.9	23.1	1.0	775
3000	29.2	29.9	1.0	733
3500	36.0	41.2	0.9	655
4000	42.5	49.1	0.9	653
4500	48.0	61.6	0.8	584
5000	53.9	86.6	0.6	465
5500	59.7	119.5	0.5	375
6000	65.8	133.4	0.5	375
6290	70.1	137.7	0.5	375
7000	0.0	0.0	0.0	0

This data is internal to Brunswick.