



TEST CONDITIONS

Test Date	3/20/23
Test Conductor	Bret Martin
Boat Weight as Tested (lbs)	8550
Air Temperature (degrees F)	64
Elevation (ft)	0
Sea State	Choppy
Wind Velocity range (mph)	20
Fresh/Salt Water	Saltwater
Fuel Level at Testing (gal)	45

ENGINE SPECIFICATIONS

Number of Engines	2
Engine	V8 Verado
Horsepower	300
Cylinders	8
Drive or gear model and ratio	HD Camber 1.85
Mounting Bolt Hole	4,4
Engine Height (in)	3.0,3.0
Engine Setback (in)	34.0,34.0
Engine Length (in)	30,30

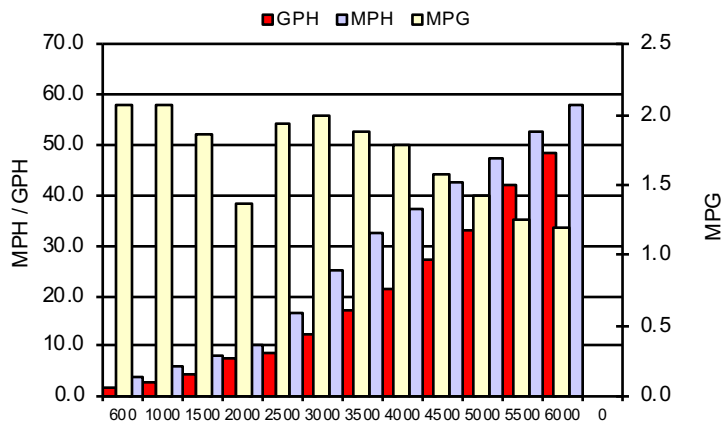
PERFORMANCE SUMMARY

Top Speed (mph @ rpm)	57.6	6012
Acceleration 0 - 20 mph (seconds)	3.48	
Acceleration 0 - 30 mph (seconds)	5.42	

PROPELLER SPECIFICATIONS

Mercury Name	Enertia ECO
Material	Stainless Steel
Pitch	19.0,19.0
Number of Blades	3

PERFORMANCE CURVE



BOAT SPECIFICATIONS

Region/s sold	
Manufacturer	Twin Vee
Website	
Boat Model	280 GFX
Boat Type	Offshore Saltwater
Material	Fiberglass
Length (ft)	28
Beam (ft)	9.6
Max hp Capacity	0
Fuel Tank Capacity (gal)	230
Steering Type	Power Steering
Dry Boat Weight (lbs)	8200

PERFORMANCE DATA

RPM	SPEED	FUEL CONSUMPTION	FUEL CONSUMPTION	RANGE
RANGE	MPH	GPH	MPG	MILES
600	4.0	1.9	2.1	474
1000	5.9	2.8	2.1	477
1500	8.1	4.4	1.9	426
2000	10.1	7.5	1.4	312
2500	16.7	8.6	1.9	444
3000	25.0	12.5	2.0	460
3500	32.2	17.2	1.9	432
4000	37.4	21.1	1.8	409
4500	42.6	27.0	1.6	363
5000	47.0	32.8	1.4	329
5500	52.8	42.2	1.3	288
6000	57.6	48.4	1.2	274
0	0.0	0.0	0.0	0
0	0.0	0.0	0.0	0

This data is internal to Brunswick.