

# BOAT HOUSE BULLETIN®



A Factual Report from Mercury Marine

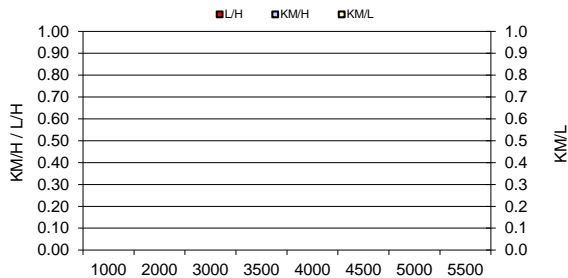
## TEST CONDITIONS

Test Date	
Test Conductor	
Boat Weight as Tested (kg)	
Air Temperature (degrees C)	
Elevation (m)	#REF!
Sea State (calm / smooth / slight / moderate)	
Wind Velocity range (km/h)	
Fresh/Salt Water	
Fuel Level at Testing (l)	

## PERFORMANCE SUMMARY

Top Speed (km/h @ rpm)	#REF!
Acceleration 0 - 20 km/h (seconds)	#REF!
Acceleration 0 - 30 km/h (seconds)	#REF!
Best Fuel Economy (km/l @ rpm)	#REF!

## PERFORMANCE CURVE



## PERFORMANCE DATA

RPM	SPEED	FUEL CONSUMPTION	FUEL CONSUMPTION	RANGE	SOUND
RANGE	KM/H	L/H	KM/L	KM	dB-A
1000	#REF!	#REF!	#REF!	#REF!	
2000	#REF!	#REF!	#REF!	#REF!	
3000	#REF!	#REF!	#REF!	#REF!	
3500	#REF!	#REF!	#REF!	#REF!	
4000	#REF!	#REF!	#REF!	#REF!	
4500	#REF!	#REF!	#REF!	#REF!	
5000	#REF!	#REF!	#REF!	#REF!	
5500	#REF!	#REF!	#REF!	#REF!	
6000	#REF!	#REF!	#REF!	#REF!	
Top RPM	#REF!	#REF!	#REF!	#REF!	

## ENGINE SPECIFICATIONS

Number of Engines	
Engine	
Horsepower	
Cylinders	
Drive or gear model and ratio	

## BOAT SPECIFICATIONS

Region/s sold	
Manufacturer	
Website	
Boat Model	
Boat Type	
Material	
Length (m)	
Beam (m)	
Max hp Capacity	
Fuel Tank Capacity (l)	
Steering Type	
Dry Boat Weight (kg)	
Mounting Bolt Hole (outboard)	

## PROPELLER SPECIFICATIONS

Part Number	
Part Number	
Part Number	
Part Number	
Mercury Name	
Material	
Diameter/Pitch	
Number of Blades	

MERCURY MARINE PO BOX 1939 FOND DU LAC, WISCONSIN 54936-1939

©2015 Mercury Marine, All Rights Reserved. Results on individual boats may vary depending on many factors.

800-MERCURY MERCURYMARINE.COM

# BOAT HOUSE BULLETIN®



A Factual Report from Mercury Marine

## TEST CONDITIONS

Test Date	6/23/23
Test Conductor	Bret Martin
Boat Weight as Tested (kg)	6255.93
Air Temperature (degrees C)	
Elevation (m)	0
Sea State (calm / smooth / slight / moderate)	10
Wind Velocity range (kn)	8.695652174
Fresh/Salt Water	Saltwater
Fuel Level at Testing (l)	0

## ENGINE SPECIFICATIONS

Number of Engines	2
Engine	V8 Verado
Horsepower	400
Cylinders	8
Drive or gear model and ratio	HD Camber 2.08

Hole

Height

Setback

Length

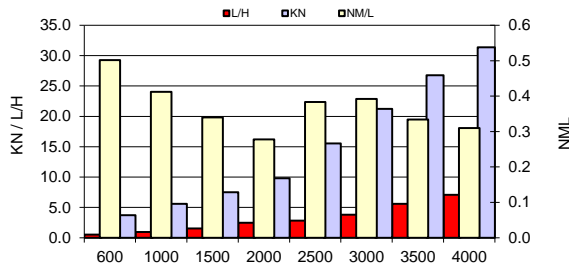
## PERFORMANCE SUMMARY

Top Speed (kn @ rpm)	49.2	6,170
Acceleration 0 - 20 kn (seconds)	#REF!	
Acceleration 0 - 30 kn (seconds)	#REF!	

## PROPELLER SPECIFICATIONS

Mercury Name		
Material		
Diameter/Pitch		
Number of Blades		

## PERFORMANCE CURVE



## PERFORMANCE DATA

RPM	SPEED	FUEL CONSUMPTION	FUEL CONSUMPTION	RANGE	SOUND
RANGE	KN	L/H	NM/L	NM	dB-A
600	3.7	0.5	0.5	723.4	
1000	5.6	0.9	0.4	594.1	
1500	7.5	1.5	0.3	490.3	
2000	9.8	2.5	0.3	400.4	
2500	15.6	2.8	0.4	553.1	
3000	21.2	3.8	0.4	565.0	
3500	26.8	5.6	0.3	481.8	
4000	31.4	7.1	0.3	446.5	
4500	35.6	8.9	0.3	402.5	
5000	39.7	12.7	0.2	314.3	
5500	43.9	15.6	0.2	284.1	
6000	48.4	17.4	0.2	281.3	
0	0.0	0.0	0.0	0.0	

## BOAT SPECIFICATIONS

Region/s sold	
Manufacturer	
Website	
Boat Model	
Boat Type	
Material	
Length (m)	
Beam (m)	
Max hp Capacity	
Fuel Tank Capacity (l)	
Steering Type	
Dry Boat Weight (kg)	
Mounting Bolt Hole (outboard)	

**TEST CONDITIONS**

Test Date	6/23/23
Test Conductor	Bret Martin
Boat Weight as Tested (lbs)	13810
Air Temperature (degrees F)	90
Elevation (ft)	0
Sea State	Calm
Wind Velocity range (mph)	10
Fresh/Salt Water	Saltwater
Fuel Level at Testing (gal)	232

**ENGINE SPECIFICATIONS**

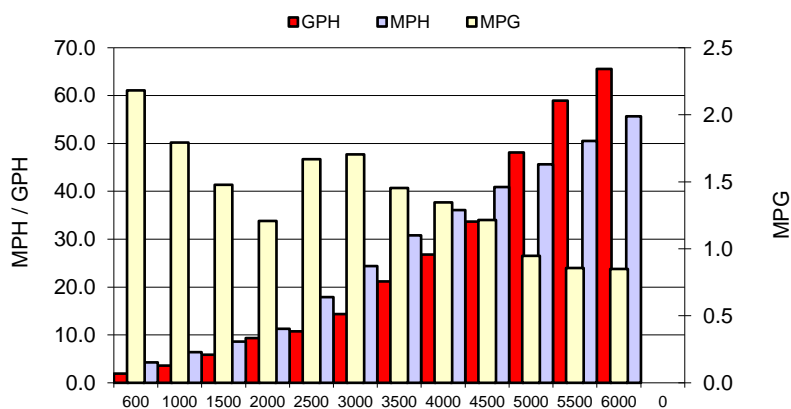
Number of Engines	2
Engine	V10 Verado
Horsepower	400
Cylinders	10
Drive or gear model and ratio	HD Camber 2.08
Mounting Bolt Hole	4,4
Engine Height (in)	3.5,3.5
Engine Setback (in)	27.0,27.0
Engine Length (in)	30,30

**PERFORMANCE SUMMARY**

Top Speed (mph @ rpm)	56.6	6170
Acceleration 0 - 20 mph (seconds)	4.61	
Acceleration 0 - 30 mph (seconds)	6.98	

**PROPELLER SPECIFICATIONS**

Mercury Name	Revolution X
Material	Stainless Steel
Pitch	22.0,22.0
Number of Blades	4

**PERFORMANCE CURVE**

**BOAT SPECIFICATIONS**

Region/s sold	
Manufacturer	Twin Vee
Website	
Boat Model	340 GFX
Boat Type	Offshore Saltwater
Material	Fiberglass
Length (ft)	34
Beam (ft)	11
Max hp Capacity	0
Fuel Tank Capacity (gal)	382
Steering Type	Hydraulic Steering
Dry Boat Weight (lbs)	11300

**PERFORMANCE DATA**

RPM	SPEED	FUEL CONSUMPTION	FUEL CONSUMPTION	RANGE
RANGE	MPH	GPH	MPG	MILES
600	4.3	2.0	2.2	833
1000	6.4	3.6	1.8	684
1500	8.6	5.8	1.5	565
2000	11.3	9.3	1.2	461
2500	17.9	10.7	1.7	637
3000	24.4	14.3	1.7	651
3500	30.8	21.2	1.5	555
4000	36.1	26.8	1.3	514
4500	40.9	33.7	1.2	464
5000	45.6	48.1	0.9	362
5500	50.5	59.0	0.9	327
6000	55.6	65.6	0.8	324
0	0.0	0.0	0.0	0
0	0.0	0.0	0.0	0

This data is internal to Brunswick.

Test Date		6/23/23
Test Conductor	Bret Martin	
Boat Weight as Tested (lbs)		13810
Air Temperature (degrees F)		90
Elevation (ft)		0
Sea State(calm / smooth / slight / moderate)	Calm	
Wind Velocity range (mph)		10
Fresh/Salt Water	Saltwater	
Fuel Level at Testing (gal)		0
Number of Engines		2
Engine	V8 Verado	
Horsepower		400
Cylinders		8
Drive or gear model and ratio	HD Camber 2.08	
Mounting Bolt Hole (outboard)	2,2	
Engine Height (in)	3.5,3.5	
Engine Setback (in)	27.0,27.0	
Engine Length	30,30	
Manufacturer	Twin Vee	
Boat Model	340 GFX	
Boat Type	Offshore Saltwater	
Material	Fiberglass	
Length (in)		34
Beam (in)		11
Max hp Capacity		0
Fuel Tank Capacity (gal)		382
Steering Type	Hydraulic Steering	
Dry Boat Weight (lbs)		11300
Top Speed (MPH)		56.6
Top Speed (RPM)		6170
Z20		4.61
Z30		6.98
RPM		600
SPEED (MPH)		4.27503248
FUEL RATE (GPH)		1.959627896
FUEL ECON (MPG)		2.181553186
RANGE (MI)		833.3533171
Mercury Name	Revolution 4	
Material	Stainless Steel	
Diameter/Pitch	22.0,22.0	
Number of Blades		4

6/23/23

1000	1500	2000	2500	3000
6.423733398	8.640785126	11.28907	17.88989	24.4205
3.585078212	5.843880898	9.348849	10.72558	14.331
1.791797283	1.478603907	1.207536	1.667965	1.704033
684.4665619	564.8266924	461.2786	637.1626	650.9407

3500	4000	4500	5000	5500	6000	0	0
30.80385	36.06064	40.89118	45.62292	50.51622	55.64937	0	0
21.19908	26.7805	33.68437	48.12719	58.95606	65.59001	0	0
1.453075	1.346526	1.213951	0.947966	0.856845	0.848443	0	0
555.0746	514.373	463.7293	362.1229	327.3149	324.1051	0	0