

TEST CONDITIONS

Test Date	5/12/23
Test Conductor	
Boat Weight as Tested (lbs)	4490
Air Temperature (degrees F)	86
Elevation (ft)	0
Sea State	Choppy
Wind Velocity range (mph)	15
Fresh/Salt Water	Saltwater
Fuel Level at Testing (gal)	40

ENGINE SPECIFICATIONS

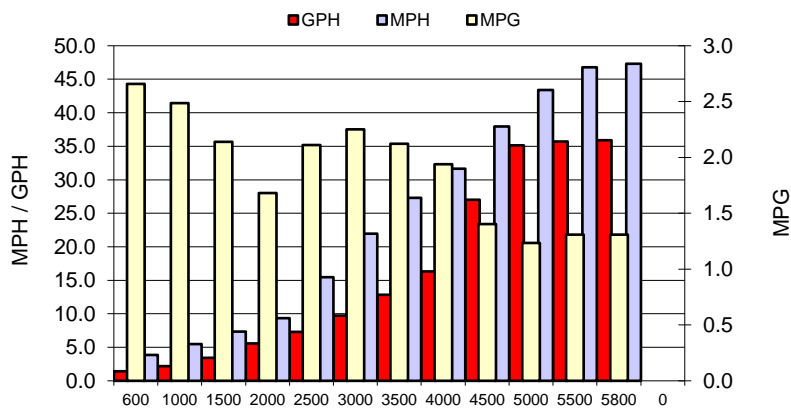
Number of Engines	2
Engine	V6 FourStroke
Horsepower	200
Cylinders	6
Drive or gear model and ratio	HD Camber 1.85
Mounting Bolt Hole	2,2
Engine Height (in)	3.8,3.8
Engine Setback (in)	27.0,27.0
Engine Length (in)	25,25

PERFORMANCE SUMMARY

Top Speed (mph @ rpm)	47.3	5698
Acceleration 0 - 20 mph (seconds)	4.28	
Acceleration 0 - 30 mph (seconds)	6.57	

PROPELLER SPECIFICATIONS

Mercury Name	Eneria
Material	Stainless Steel
Pitch	17.0,17.0
Number of Blades	3

PERFORMANCE CURVE

BOAT SPECIFICATIONS

Region/s sold	
Manufacturer	Twin Vee
Website	
Boat Model	260GFX
Boat Type	Offshore Saltwater
Material	Fiberglass
Length (ft)	26
Beam (ft)	8.8
Max hp Capacity	0
Fuel Tank Capacity (gal)	150
Steering Type	Power Steering
Dry Boat Weight (lbs)	3600

PERFORMANCE DATA

RPM	SPEED	FUEL CONSUMPTION	FUEL CONSUMPTION	RANGE
RANGE	MPH	GPH	MPG	MILES
600	3.9	1.4	2.7	399
1000	5.5	2.2	2.5	373
1500	7.3	3.4	2.1	321
2000	9.4	5.6	1.7	252
2500	15.4	7.3	2.1	317
3000	21.9	9.8	2.3	338
3500	27.3	12.9	2.1	319
4000	31.7	16.3	1.9	291
4500	37.9	27.0	1.4	211
5000	43.4	35.2	1.2	185
5500	46.8	35.7	1.3	197
5800	47.3	35.9	1.3	197
0	0.0	0.0	0.0	0
0	0.0	0.0	0.0	0

This data is internal to Brunswick.